

## 2014 Latest Pass4sure&Lead2pass Citrix 1Y0-A22 Dumps (51-60)

### QUESTION 51

Scenario: Some users in remote offices complain that Citrix sessions are slow, and the network administrator has asked the Citrix Administrator to determine whether any data transmission errors are occurring for a group of sample users. In this environment, EdgeSight, Branch repeater and Session reliability are NOT used.

How can the Citrix Administrator determine the extent of data transmissions errors based on the sample users?

- A. Configure Multi-Stream for sample users.
- B. Open the Citrix Connection Center for sample users.
- C. Enable ICA round trip calculations for idle connections for sample users.
- D. Change the active session limit to something other than Never in the ICA-TCP settings.

Answer: B

### QUESTION 52

#### Lab Simulation

Scenario: The Xirtic environment consists of two datacenters: Tokyo and Seoul. Servers in the environment are categorized into worker groups: Engineering Apps and Office Productivity Apps.

There are total of four servers in the environment.

Location	Server Name	Worker Group Membership	IP Address / Subnet Mask
Tokyo	XTXATY01	Engineering Apps	192.168.1.4/ 255.255.255.0
	XTXATY02	Office Productivity Apps	192.168.1.5/ 255.255.255.0
Seoul	XTXASL01	Office Productivity Apps	172.16.1.4/ 255.255.255.0
	XTXASL02	Engineering Apps	172.16.1.5/ 255.255.255.0

The various offices are on the following subnets:

Tokyo

- 192.168.1.0/24

Seoul

- 172.16.1.0/24

The XenApp servers can be accessed internally or externally using the following FQDNs:

Server	Internal FQDN	External FQDN
XTXATY01	XTXATY01.XIRTIC.LOCAL	XTXATY01.XIRTIC.COM
XTXATY02	XTXATY02.XIRTIC.LOCAL	XTXATY02.XIRTIC.COM
XTXATY01	XTXATY01.XIRTIC.LOCAL	XTXATY01.XIRTIC.COM
XTXATY02	XTXATY02.XIRTIC.LOCAL	XTXATY02.XIRTIC.COM

Information about application access and usage:

- Engineering users need access to the Design Project application.
- Engineering users must access the application through Web interface while on the corporate network and from remote locations.

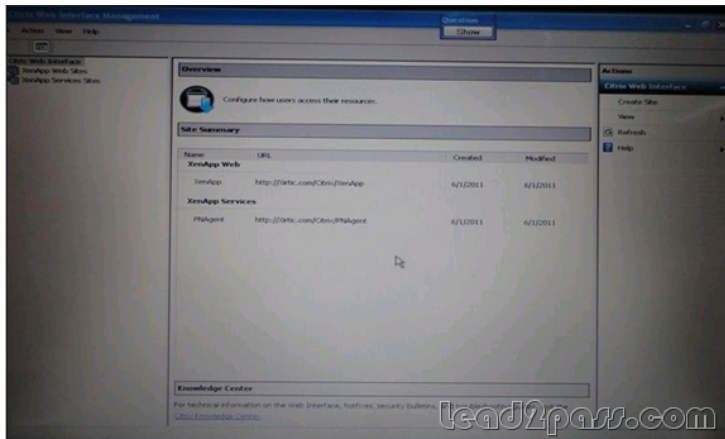
- Engineering users access both published and streamed applications.

Information about security:

- A corporate policy mandates that separate sites are created TokyoEngineering users and SeoulEngineering users.
- Management also wants to address given to the client to be determined by the address translation mappings in Web Interface.
- The public domain name is Xirtic.com and the internal domain name is Xirtic.local
- All server hostnames are the same internally and externally.

Tasks:

As the XenApp Administrator, configure the necessary settings in the Web interface Management Console to meet the requirements specified by the Xirtic management team.



Answer: Pending

#### QUESTION 53

As part of a migration from XenApp 5 to XenApp 6.5, a company plans to migrate existing published application data to the new farm.

Which tool should an administrator use to complete the migration?

- A. XenApp Prep Integration Tool
- B. XenApp Server Role manager
- C. Citrix XenApp Migration Center
- D. Citrix AppCenter in the target farm

Answer: C

#### QUESTION 54

Scenario: An administrator deployed Remote Desktop roaming Profiles within an existing XenApp farm. As part of the transition to XenApp 6.5, Citrix Profile management will replace the existing profile solution for XenApp user sessions.

Which two components must the administrator modify in order to implement this solution? (Choose two)

- A. Web Interface
- B. XenApp server
- C. Citrix License Server
- D. Active Directory GPOs

Answer: BD

### QUESTION 55

#### Lab Simulation

Scenario: A Citrix Administrator in the Xirtic environment has configured a new XenApp farm with three serves and plans to add more servers to the farm at a later time. The administrator wants to configure the XenApp environment so that additional servers can be added with reduced effort.

Applications published in the environment are distributed on servers in the following ways:

XTXATY01: Microsoft Office

XTXATY01: CRM

XTXASL01: Microsoft office and CRM

#### Tasks:

Create the least amount of worker groups necessary to ensure new servers added to the farm are automatically assigned to specific application workloads.

Use the following naming convention: WorkGroup1, WorkGroup2.



Answer: Pending

### QUESTION 56

An administrator is configuring a XenApp 6.5 farm that has the default printer settings still in place. Which configuration would require the administrator to make a change to the default printer settings?

- A. Auto-create all client printers
- B. Auto-install native printer drivers
- C. Do not use Universal printing compression
- D. Only use Universal printing if the requested driver is unavailable

Answer: D

### QUESTION 57

Scenario: An administrator needs to configure scheduled restarts for half the farm at 1:00 pm and the other half at 2:00 pm. All the servers resides in the same OU.

Which two actions should the administrator take to meet the requirements of the scenario? (Choose two)

- A. Go to the servers in AppCenter, and use the Logon Control options.
- B. Create worker groups named 1PM and 2PM, and add server accordingly.
- C. Create two Citrix policies with settings to restart, and filter the policies by worker group.
- D. Create two GPOs with settings to restart, and assign the GPOs to OU containing the farm servers.

Answer: BC

#### QUESTION 58

Scenario: An administrator needs to provide quick access and fast experience for a group of users when they access one important application. These users are members of group called CTX-VIP.

How can the administrator configure the environment to ensure that these users will have the experience that they need when they use the important application?

- A. Profile and stream the important application for the CTX-VIP group to the XenApp servers.
- B. Enable the Preferential Load Balancing policy, assign a High session interface for group CTX- VIP and set the application importance for this application.
- C. Configure the Citrix user policy settings to assign more CPU for this group and configure the computer policy enabling the fair sharing of CPU between sessions.
- D. Create a load evaluator with low CPU threshold, assign for the group CTX-VIP and configure a computer policy with Preferential Load Balancing enabled for this group.

Answer: B

#### QUESTION 59

An executive is connecting to the corporate XenApp Web interface and clicks on the published application he wishes to use, but nothing happens.

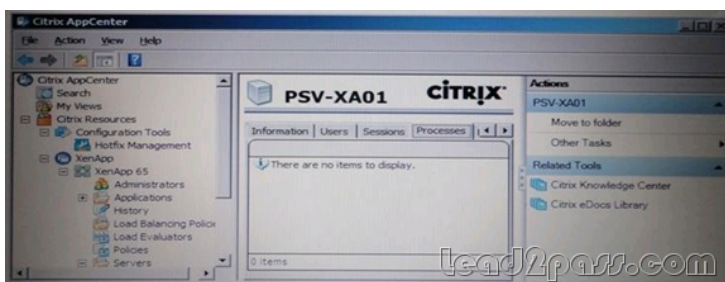
What could be causing this issue?

- A. The web interface site is not configured properly
- B. One XenApp server is NOT able to process the request.
- C. The published application references included in the ICA file are not valid.
- D. The zone data collector is too busy to process the launch application request.

Answer: C

#### QUESTION 60

An administrator is attempting to view information about a server process from the XenCenter console which is displayed in the attached exhibit.



Which communication process is malfunctioning?

- A. ICA
- B. IMA
- C. SSL
- D. XML

Answer: B

If you want to pass Citrix 1Y0-A22 successfully, donot missing to read latest lead2pass Citrix 1Y0-A22 practice tests.  
If you can master all lead2pass questions you will able to pass 100% guaranteed.

<http://www.lead2pass.com/1Y0-A22.html>