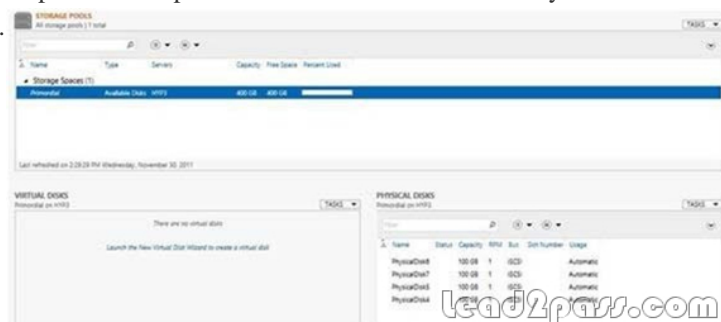
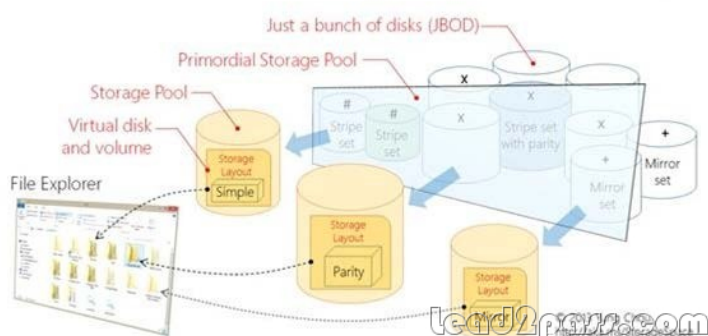


Free Download Microsoft 70-410 VCE Test Engine Full Version Now (121-130)

QUESTION 121 You have a server named Server1 that runs Windows Server 2012 R2. Server1 has following storage spaces:- Data - Users - Backups - Primordial You add an additional hard disk to Server1. You need to identify which storage space contains the new hard disk. Which storage space contains the new disk? A. Data B. Primordial C. Users D. Backups **Answer:** B **Explanation:** New Disks (Unallocated space) added to Primordial space Primordial Pool? All storage that meets acceptable criteria for Storage Spaces will be placed in the Primordial Pool. This can be considered the default pool for devices from which any other pools will be created. Notice that there are no other virtual disks or pools at this point. The Primordial Pool will only consist of physical storage devices that do not belong to any other pools.



Windows Server 2012 Storage Virtualization Concept



<http://blogs.technet.com/b/canitpro/archive/2012/12/13/storage-pools-dive-right-in.aspx>

<http://blogs.technet.com/b/askpfplat/archive/2012/10/10/windows-server-2012-storagespaces-is-it-for-youcould-be.aspx>

QUESTION 122 You have a server named Server1. Server1 runs Windows Server 2012 R2 and has the File and Storage Services server role installed. You attach four 500-GB disks to Server1. You need to configure the storage to meet the following requirements:- Storage for an application named Application1 must be provided. Application1 requires 20 GB and will require a maximum of 800 GB in three years. - Storage for an application named Application2 must be provided. Application2 requires 20 GB and will require a maximum of 900 GB in three years. - The solution must provide the ability to dynamically add storage without requiring configuration changes to the applications.- The storage must be available if a single disk fails. Which two actions should you perform? (Each correct answer presents part of the solution. Choose two.) A. From File and Storage Services, create virtual disks by using fixed provisioning. B. From File and Storage Services, create a storage pool that uses all four disks. C. From Disk Management, create two new mirror volumes that use two disks each. D. From Disk Management, create a new RAID-5 volume that uses all four disks. E. From File and Storage Services, create virtual disks by using thin provisioning. **Answer:** B E

Explanation: Original answer is AB. But the correct answer is B and E. It can't be A, because a fixed disk can't get expanding.

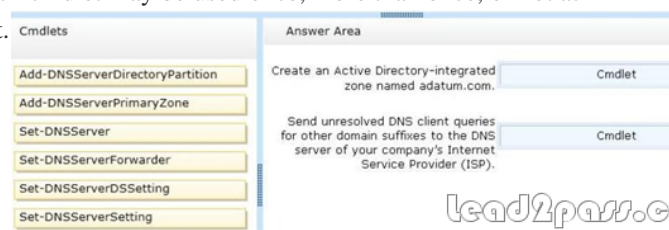
QUESTION 123 Your network contains multiple subnets. On one of the subnets, you deploy a server named Server1 that runs Windows Server 2012 R2. You install the DNS Server server role on Server1, and then you create a standard primary zone named contoso.com. You need to ensure that client computers can resolve single-label names to IP addresses. What should you do first? A. Create a reverse lookup zone. B. Convert the contoso.com zone to an Active Directory-integrated zone. C. Configure dynamic updates for contoso.com. D. Create a GlobalNames zone. **Answer:** D **Explanation:** D. Use GlobalNames zones in Windows Server 2008 to take advantage of single-label names. Providing Single-Label DNS Name Resolution: While Domain Name System (DNS) is the predominant name-resolution technology in TCP/IP networks, Windows Internet Name Service (WINS) is deployed in many

networks as an alternative name-resolution protocol. GlobalNames Zone (GNZ) feature: The GNZ feature is designed to enable DNS resolution of these single-label, static, global names. You can deploy a GNZ in a single forest or across multiple forests. GNZ is intended to aid the retirement of WINS. It is not a replacement for WINS. GNZ is not intended to support the single-label name resolution of records that are registered dynamically and therefore not managed by IT administrators. GNZ does make it possible for you to provide single-label name resolution of a fixed set of host computers whose names are guaranteed to be both global and unique. <http://technet.microsoft.com/en-us/library/cc731744.aspx> [http://technet.microsoft.com/en-us/library/cc816610\(v=ws.10\).aspx](http://technet.microsoft.com/en-us/library/cc816610(v=ws.10).aspx)

QUESTION 124 You have a server named Server1 that runs Windows Server 2012 R2. Server1 has six network adapters. Two of the network adapters are connected to a network named LAN1, two of the network adapters are connected to a network named LAN2, and two of the network adapters are connected to a network named LAN3. You create a network adapter team named Team1 from the two adapters connected to LAN1. You create a network adapter team named Team2 from the two adapters connected to LAN2. A company policy states that all server IP addresses must be assigned by using a reserved address in DHCP. You need to identify how many DHCP reservations you must create for Server1. How many reservations should you identify? A. 3B. 4C. 6D. 8

Answer: B
Explanation: 2 Adapters = LAN1 = Team1 = 1 IP
2 Adapters = LAN2 = Team2 = 1 IP
2 Adapters = LAN3 = No Team = 2 IP
1 + 1 + 2 = 4
QUESTION 125 Your network contains an Active Directory domain named contoso.com. All servers run Windows Server 2012 R2. The domain contains a server named Server1. You open Review Options in the Active Directory Domain Services Configuration Wizard, and then you click View script. You need to ensure that you can use the script to promote Server1 to a domain controller. Which file extension should you use to save the script? A. .palB. .batC. .xmlD. .cmd

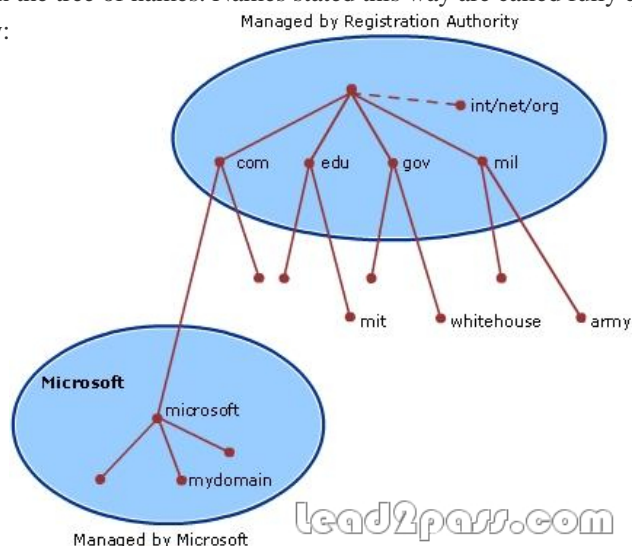
Answer: A
Explanation: The View Script button is used to view the corresponding PowerShell script. The PowerShell script extension is .ps1. The Answer could logically be either a .cmd file or a .bat file. According to <http://www.fileinfo.com/>: PAL - Settings file created by Corel Painter or Palette of colors used by Dr. Halo bitmap images BAT - DOS batch file used to execute commands with the Windows Command Prompt (cmd.exe); contains a series of line commands that typically might be entered at the DOS command prompt; most commonly used to start programs and run maintenance utilities within Windows. XML - XML (Extensible Markup Language) data file that uses tags to define objects and object attributes; formatted much like an .HTML document, but uses custom tags to define objects and the data within each object; can be thought of as a text-based database. CMD - Batch file that contains a series of commands executed in order; introduced with Windows NT, but can be run by DOS or Windows NT systems; similar to a .BAT file, but is run by CMD.EXE instead of COMMAND.COM.
QUESTION 126 Your network contains an Active Directory domain named contoso.com. The domain contains a server named Server1. Server1 runs a Server Core installation of Windows Server 2012 R2. You install the DNS Server server role on Server1. You need to perform the following configurations on Server1: Create an Active Directory-integrated zone named adatum.com. Send unresolved DNS client queries for other domain suffixes to the DNS server of your company's Internet Service Provider (ISP). Which Windows PowerShell cmdlets should you use? To answer, drag the appropriate cmdlet to the correct configuration in the answer area. Each cmdlet may be used once, more than once, or not at all. You may need to drag the split bar between panes or scroll to view content.



Answer: Create an Active Directory-integrated zone named adatum.com. Add-DnsServerPrimaryZone
Send unresolved DNS client queries for other domain suffixes to the DNS server of your company's Internet Service Provider (ISP). Set-DnsServerForwarder

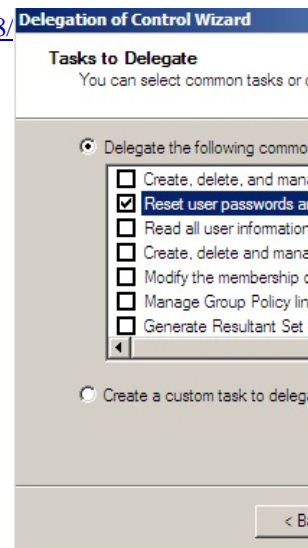
Explanation: Add-DnsServerDirectoryPartition: Creates a DNS application directory partition. Add-DnsServerPrimaryZone: Adds a primary zone to a DNS server. Set-DnsServer Overwrites a DNS server configuration. Set-DnsServerForwarder Changes forwarder settings on a DNS server. Set-DnsServerDSSetting Modifies DNS Active Directory settings. Set-DnsServerSetting Modifies DNS server settings. [http://technet.microsoft.com/en-us/library/jj649942\(v=wps.620\).aspx](http://technet.microsoft.com/en-us/library/jj649942(v=wps.620).aspx) [http://technet.microsoft.com/en-us/library/jj649876\(v=wps.620\).aspx](http://technet.microsoft.com/en-us/library/jj649876(v=wps.620).aspx) [http://technet.microsoft.com/en-us/library/jj649845\(v=wps.620\).aspx](http://technet.microsoft.com/en-us/library/jj649845(v=wps.620).aspx)

[http://technet.microsoft.com/en-us/library/jj649887\(v=ws.620\).aspx](http://technet.microsoft.com/en-us/library/jj649887(v=ws.620).aspx) <http://technet.microsoft.com/en-us/library/jj649874.aspx>
<http://technet.microsoft.com/en-us/library/jj649909.aspx> QUESTION 127 Your network contains an Active Directory domain named contoso.com. The network contains 500 client computers that run Windows 8. All of the client computers connect to the Internet by using a web proxy. You deploy a server named Server1 that runs Windows Server 2012 R2. Server1 has the DNS Server server role installed. You configure all of the client computers to use Server1 as their primary DNS server. You need to prevent Server1 from attempting to resolve Internet host names for the client computers. What should you do on Server1? A. Create a primary zone named ".". B. Configure the Security settings of the contoso.com zone. C. Create a zone delegation for GlobalNames.contoso.com. D. Create a stub zone named "root". Answer: A Explanation: When you install DNS on a Windows server that does not have a connection to the Internet, the zone for the domain is created and a root zone, also known as a dot zone, is also created. This root zone may prevent access to the Internet for DNS and for clients of the DNS. If there is a root zone, there are no other zones other than those that are listed with DNS, and you cannot configure forwarders or root hint servers. Root domain This is the top of the tree, representing an unnamed level; it is sometimes shown as two empty quotation marks (""), indicating a null value. When used in a DNS domain name, it is stated by a trailing period (.) to designate that the name is located at the root or highest level of the domain hierarchy. In this instance, the DNS domain name is considered to be complete and points to an exact location in the tree of names. Names stated this way are called fully qualified domain names (FQDNs). DNS Domain Name Hierarchy:



QUESTION 128 Your network contains an Active Directory domain named contoso.com. The domain contains 100 user accounts that reside in an organizational unit (OU) named OU1. You need to ensure that a user named User1 can link and unlink Group Policy objects (GPOs) to OU1. The solution must minimize the number of permissions assigned to User1. What should you do? A. Modify the permissions on OU1. B. Run the Set-GPPermission cmdlet. C. Add User1 to the Group Policy Creator Owners group. D. Modify the permissions on the User1 account. Answer: A Explanation:

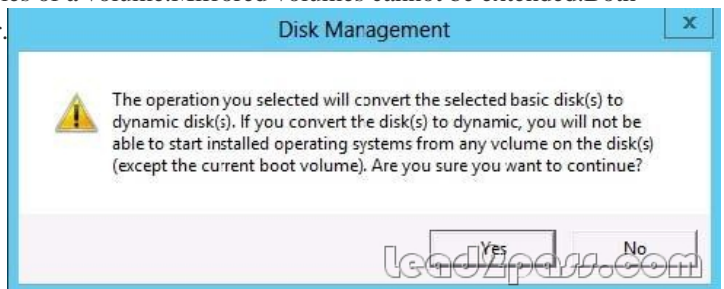
<http://www.howtogeek.com/50166/using-the-delegation-of-control-wizard-to-assign-permissions-in-server-2008/>



QUESTION 129 You have a server that runs Windows Server 2012 R2. The server contains the disks configured as shown in the following table.

Disk name	Partition table type	Disk storage type	Unallocated disk space
Disk 0	GPT	Dynamic	2 TB
Disk 1	MBR	Basic	1 TB
Disk 2	GPT	Dynamic	4 TB
Disk 3	GPT	Dynamic	4 TB
Disk 4	MBR	Basic	2 TB

You need to create a volume that can store up to 3 TB of user files. The solution must ensure that the user files are available if one of the disks in the volume fails. What should you create? A. a mirrored volume on Disk 1 and Disk 4B. a mirrored volume on Disk 2 and Disk 3C. a RAID-5 volume on Disk 1, Disk 2, and Disk 3D. a spanned volume on Disk 0 and Disk 4 Answer: B Explanation: A mirrored volume provides an identical twin of the selected volume. All data written to the mirrored volume is written to both volumes, which results in disk capacity of only 50 percent. Any volume can be mirrored, including the system and boot volumes. The disk that you select for the shadow volume does not need to be identical to the original disk in size, or in its number of tracks and cylinders. This means that you do not have to replace a failed disk with an identical model. The unused area that you select for the shadow volume cannot be smaller than the original volume. If the area that you select for the shadow volume is larger than the original, the extra space on the shadow disk can be configured as another volume. Dynamic disks provide features that basic disks do not, such as the ability to create volumes that span multiple disks (spanned and striped volumes) and the ability to create fault-tolerant volumes (mirrored and RAID-5 volumes). The following operations can be performed only on dynamic disks: Create and delete simple, spanned, striped, mirrored, and RAID-5 volumes. Extend a simple or spanned volume. Remove a mirror from a mirrored volume or break the mirrored volume into two volumes. Repair mirrored or RAID-5 volumes. Reactivate a missing or offline disk. You need at least two dynamic disks to create a mirrored volume. Mirrored volumes are fault tolerant and use RAID-1, which provides redundancy by creating two identical copies of a volume. Mirrored volumes cannot be extended. Both copies (mirrors) of the mirrored volume share the same drive letter.

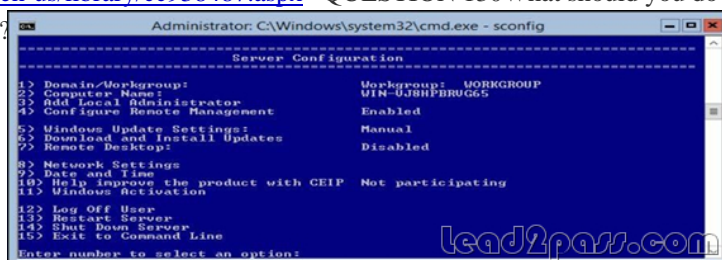


<http://technet.microsoft.com/en-us/library/cc779765%28v=ws.10%29.aspx>

<http://msdn.microsoft.com/en-us/library/windows/desktop/aa363785%28v=vs.85%29.aspx>

<http://technet.microsoft.com/en-us/library/cc938487.aspx>

QUESTION 130 What should you do for server core so it can be managed from another server 2012 R2?



A. 1B. 2C. 3D. 4E. 5F. 6G. 7H. 8I. 9J. 10K. 11L. 12M. 13N. 14O. 15 Answer: H Explanation: 4)

Configure Remote Management is already "Enabled". 8) Network Settings You can configure the IP address to be assigned automatically by a DHCP Server or you can assign a static IP address manually. This option allows you to configure DNS Server settings for the server as well. <http://technet.microsoft.com/en-us/library/jj647766.aspx>

If you want to pass Microsoft 70-410 successfully, donot missing to read latest lead2pass Microsoft 70-410 exam questions. If you can master all lead2pass questions you will able to pass 100% guaranteed. <http://www.lead2pass.com/70-410.html>