

## Passed Microsoft 70-323 Exam Today - Free Download 70-323 Dumps (1-10)

### QUESTION 1

Your company has a Microsoft Exchange Server 2003 organization. Users access their mailbox by using RPC over HTTP and Exchange ActiveSync. You purchase an Office 365 subscription. From the Office 365 portal, you create and verify the accepted domain of the company. From the Exchange Control Panel, you attempt to migrate all of the mailboxes to Microsoft Exchange Online and you receive an error message indicating that the remote server is unavailable. You need to identify what prevents the mailboxes from migrating.

Which tool should you use?

- A. the Microsoft Remote Connectivity Analyzer
- B. the Exchange Server Deployment Assistant
- C. the Office 365 Deployment Readiness Tool
- D. the Microsoft Online Services Directory Synchronization Configuration Wizard

Answer: A

### QUESTION 2

Your company has an intranet site that is hosted on Microsoft SharePoint Online. The site is currently available in English only. You need to make sure that users can navigate the intranet site in English and in German. What should you do?

- A. Modify the Regional settings of the intranet site.
- B. Activate the SharePoint Server Enterprise Site Collection Features.
- C. From the term store, modify the Working Languages.
- D. From the term store, change the default language.
- E. Modify the Language settings of the intranet site.
- F. Activate the SharePoint Server Publishing Infrastructure feature.

Answer: B

### QUESTION 3

Your company has a Microsoft SharePoint Online environment. The department field of each user profile contains the department of the user. All users have Office 2010 installed on their client computer. The marketing department has a Shared Documents library named MarkDocs. You need to ensure that users in the marketing department can select the MarkDocs library from the Save to SharePoint command in Microsoft Word. Other users must not see the MarkDocs library as a default option from the Save to SharePoint command. What should you do? (Each correct answer presents part of the solution. Choose all that apply.)

- A. From Publish links to Office client applications, create a link.
- B. Create a SharePoint group for the marketing department.
- C. From the Configure Personalization Site, create a link.
- D. Create an Audience for the marketing department.

Answer: AC

### QUESTION 4

Your company deploys Microsoft Lync Online. You deploy the Microsoft Lync 2010 client to all client computers. All users log on to the local domain. You need to prevent users from modifying the Advanced Connection Settings on the Lync 2010 client. What should you do?

- A. Deploy a Group Policy object (GPO) that uses the Communicator.adm administrative template.
- B. Deploy a Group Policy object (GPO) that removes all of the members of the local Administrators group.
- C. From the Lync Server Management Shell, run the Set-CsClientPolicy cmdlet.
- D. From the Lync Server Management Shell, run the Set-CsUserServicesConfiguration cmdlet.

Answer: A

#### QUESTION 5

Your company has an Exchange Server 2010 Service Pack (SP1) organization and a hybrid deployment of Office 365. You have two federation servers named Server1 and Server2. You manage Server1 and Server2 by using a user account that is a member of the Domain Admins group. You need to set the authentication method of the federation servers to forms-based authentication. What should you do?

- A. Modify the Web.config file in the %systemroot%\inetpub\adfs\ directory.
- B. Modify the Global.asax file in the %systemroot%\inetpub\adfs\ directory.
- C. From the AD FS 2.0 Management console, add a claims provider trust.
- D. From the AD FS 2.0 Management console, add a relaying party trust.

Answer: A

#### QUESTION 6

Your company has a Microsoft Exchange Server 2010 Service Pack 1 (SP1) organization and a hybrid deployment of office 365. All mailboxes are hosted on Office 365. All user accounts are hosted on-premises. You need to delete a user account and its associated mailbox. Which tool should you use?

- A. the Exchange Control Panel
- B. the Set-Mailbox cmdlet
- C. the Remove-MailUser cmdlet
- D. Active Directory Users and Computers

Answer: D

#### QUESTION 7

Your company has an Office 365 subscription. The network contains an Active Directory domain. You configure single sign-on for all users. Corporate security policy states that all account passwords used by Windows services must be changed every 90 days. An administrator changes all of the account passwords used by Windows services. You need to ensure that single sign-on continues to function. What should you do?

- A. From Windows PowerShell, run the Update-MSOLFederatedDomain cmdlet.
- B. From Internet Information Services (IIS) Manager, modify the properties of the ADFS virtual directory.
- C. From the Services console, modify the properties of the AD FS 2.0 Windows Service.
- D. From Windows PowerShell, run the Set-MSOLADFSContext cmdlet.

Answer: C

#### QUESTION 8

Your company subscribes to an Office 365 Plan E3. A user named User1 installs Office Professional Plus for Office 365 on a client computer. From the Microsoft Online Services portal, you assign User1 an Office Professional Plus license. One month after installing Office, User1 can no longer save and edit Office documents on the client computer. User1 can open and view Office

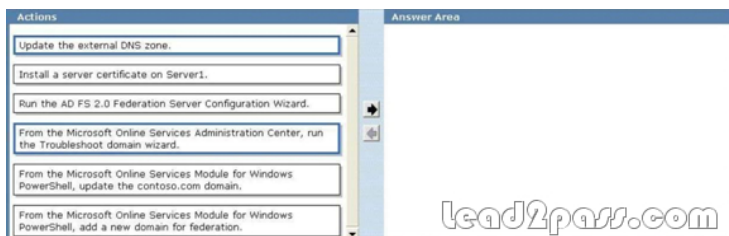
documents. You need to ensure that User1 can save and edit documents on the client computer by using office. What should you do?

- A. Install the Office Customization Tool.
- B. Reinstall Office Professional Plus.
- C. Install the Microsoft Online Services Sign-in Assistant.
- D. Upgrade the subscription to Plan E4.

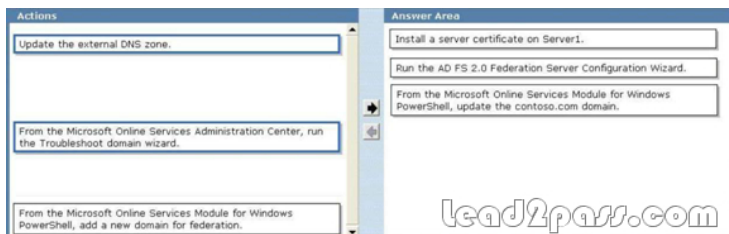
Answer: C

#### QUESTION 9

Your company has an Office 365 subscription that uses single sign-on. You have a server named Server1 that has the Active Directory Federation Services (AD FS) 2.0 server role installed. Server 1 fails. You install the AD FS 2.0 server role on a new server named Server1. You need to ensure that users can log on to Office 365 by using single sign-on. What should you do? To answer, move the appropriate actions from the list of actions to the answer area and mangle them in the correct order.



Answer:



#### QUESTION 10

Your company has a hybrid deployment of Office 365. You need to identify which certificate is used for token signing between the on-premises environment and Office 365. Which tool should you use?

- A. the Exchange Management Console
- B. the AD FS 2.0 Management console
- C. the Active Directory Domains and Trusts snap-in
- D. the Office 365 portal E. the Certificates snap-in

Answer: B

If you want to pass Microsoft 70-323 successfully, donot missing to read latest lead2pass Microsoft 70-323 exam questions. If you can master all lead2pass questions you will able to pass 100% guaranteed.

<http://www.lead2pass.com/70-323.html>