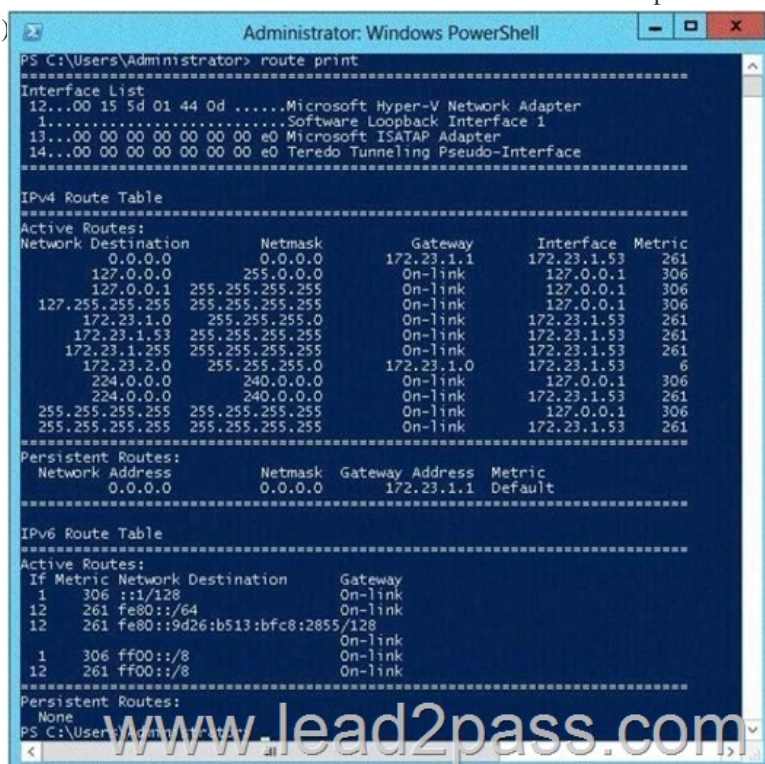


## Real Latest 70-410 Exam Questions Updated By Lead2pass With All New Added Questions (161-170)

[New Updated Version ] Where to find the newest 70-410 exam dumps to ensure your exam pass? if you want to pass exam 70-410 easily, you should download the latest updated 70-410 braindump for preparing. Now visit [Lead2pass.com](#) to get free pdf study guide with valid exam dumps and free vce dumps, which will help you passing quickly! **QUESTION 161**Your network contains an Active Directory domain named contoso.com. Your company hires 50 temporary employees for the summer. The human resources department gives you a Microsoft Excel document that contains a list of the temporary employees. You need to automate the creation of user accounts for the 500 temporary employees. Which tool should you use? A. The Add-Member cmdletB. ADSI EditC. The csvde.exe commandD. Active Directory Users and Computers Answer: CExplanation:Csvde.exe is the best option to add multiple users. as you just need to export the excel spreadsheet as a csvfile and make sure the parameters are correct.You can use Csvde to import and export Active Directory data that uses the commaseparated valueformat. Use a spreadsheet program such as Microsoft Excel to open this .csv file and view the header andvalue information.<http://support.microsoft.com/kb/327620/en-us> **QUESTION 162**Your network contains two subnets. The subnets are configured as shown in the following table.

Subnet name	Network
LAN1	172.23.1.1
LAN2	172.23.2.1

You have a server named Server2 that runs Windows Server 2012 R2. Server2 is connected to LAN1. You run the route print command as shown in the exhibit. (Click the Exhibit button.)



```
Administrator: Windows PowerShell
PS C:\Users\Administrator> route print

=====
Interface List
12...00 15 5d 01 44 0d .....Microsoft Hyper-V Network Adapter
1.....Software Loopback Interface 1
13...00 00 00 00 00 00 e0 Microsoft ISATAP Adapter
14...00 00 00 00 00 00 e0 Teredo Tunneling Pseudo-Interface
=====

IPv4 Route Table
=====
Active Routes:
Network Destination        Netmask          Gateway          Interface        Metric
-----
0.0.0.0                    0.0.0.0          172.23.1.1       172.23.1.53      261
127.0.0.0                  255.0.0.0        On-link          127.0.0.1        306
127.0.0.1                  255.0.0.0        On-link          127.0.0.1        306
127.255.255.255            255.255.255.255 On-link          127.0.0.1        306
172.23.1.0                 255.255.255.0    On-link          172.23.1.53      261
172.23.1.53                255.255.255.255 On-link          172.23.1.53      261
172.23.1.255               255.255.255.255 On-link          172.23.1.53      261
172.23.2.0                 255.255.255.0    172.23.1.0       172.23.1.53      6
224.0.0.0                  240.0.0.0        On-link          127.0.0.1        306
255.255.255.255            255.255.255.255 On-link          127.0.0.1        306
255.255.255.255            255.255.255.255 On-link          172.23.1.53      261

Persistent Routes:
Network Address      Netmask  Gateway Address  Metric
-----
0.0.0.0              0.0.0.0  172.23.1.1       Default

IPv6 Route Table
=====
Active Routes:
If Metric Network Destination      Gateway
-----
1 306 ::1/128 On-link
12 261 fe80::1/64 On-link
12 261 fe80::9d26:b513:bfc8:2855/128 On-link
1 306 ff00::/8 On-link
12 261 ff00::/8 On-link

Persistent Routes:
None
PS C:\Users\Administrator>
```

You need to ensure that Server2 can communicate with the client computers on LAN2.What should you do? A. Change the metric of the 10.10.1.0 route.B. Set the state of the Teredo interface to disable.C. Set the state of the Microsoft ISATAP Adapter #2 interface to disable.D. Run route delete 172.23.2.0. Answer: DExplanation:Route is used to view and modify the IP routing table.Route Print displays a list of current routes that the host knows.Default gateways are important to make IP routing work efficiently.TCP/IP hosts rely on default gateways for most of their communication needs with hosts on remotenetwork segments. In this way, individual hosts are freed of the burden of having to maintain extensive and continuously updated knowledge about individual remote IP network segments. Only the router that acts as the default gateway needs to maintain this level of routing knowledge to reach other remote network segments in the larger internetwork.If the default gateway fails, communication beyond the local network segment may be impaired. To prevent this, you can use the Advanced TCP/IP Settings dialog box (in Network Connections) for each connection to specify multiple default gateways. You can also use the route command to manually add routes

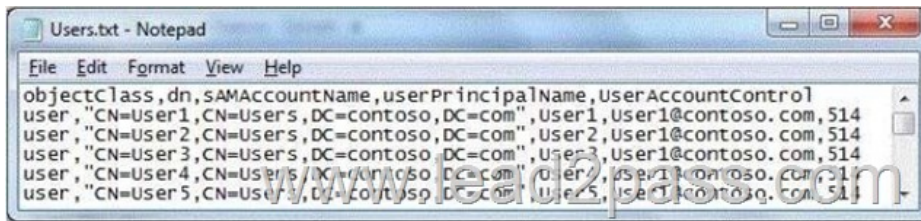
to the routing table for heavily used hosts or networks. If you have multiple interfaces and you configure a default gateway for each interface, TCP/IP by default automatically calculates an interface metric that is based on the speed of the interface. The interface metric becomes the metric of the default route in the routing table for the configured default gateway. The interface with the highest speed has the lowest metric for its default route. The result is that whenever multiple default gateways are configured on multiple interfaces, the fastest interface will be used to forward traffic to its default gateway. If multiple interfaces of the same speed have the same lowest interface metric, then, based upon the binding order, the default gateway of the first network adapter is used. The default gateway for the second network adapter is used when the first is unavailable. In order for Host A on Network 1 to communicate with Host B on Network 2, Host A first checks its routing table to see if a specific route to Host B exists. If there is no specific route to Host B, Host A forwards its TCP/IP traffic for Host B to its own default gateway, IP Router 1.

<http://technet.microsoft.com/en-us/library/cc779696%28v=ws.10%29.aspx><http://technet.microsoft.com/en-us/library/cc958877.aspx>

<http://support.microsoft.com/kb/299540/en-us> QUESTION 163 Your network contains an Active Directory domain named contoso.com. The domain contains a server named Server1. Server1 runs Windows Server 2012 R2 and has the Hyper-V server role installed. You need to log the amount of system resources used by each virtual machine. What should you do? A. From Windows PowerShell, run the Enable-VMResourceMetering cmdlet. B. From Windows System Resource Manager, enable Accounting. C. From Windows System Resource Manager, add a resource allocation policy. D. From Windows PowerShell, run the Measure-VM cmdlet. Answer: A Explanation: Route is used to view and modify the IP routing table. Route Print displays a list of current routes that the host knows. Default gateways are important to make IP routing work efficiently. TCP/IP hosts rely on default gateways for most of their communication needs with hosts on remote network segments. In this way, individual hosts are freed of the burden of having to maintain extensive and continuously updated knowledge about individual remote IP network segments. Only the router that acts as the default gateway needs to maintain this level of routing knowledge to reach other remote network segments in the larger internetwork. If the default gateway fails, communication beyond the local network segment may be impaired. To prevent this, you can use the Advanced TCP/IP Settings dialog box (in Network Connections) for each connection to specify multiple default gateways. You can also use the route command to manually add routes to the routing table for heavily used hosts or networks. If you have multiple interfaces and you configure a default gateway for each interface, TCP/IP by default automatically calculates an interface metric that is based on the speed of the interface. The interface metric becomes the metric of the default route in the routing table for the configured default gateway. The interface with the highest speed has the lowest metric for its default route. The result is that whenever multiple default gateways are configured on multiple interfaces, the fastest interface will be used to forward traffic to its default gateway. If multiple interfaces of the same speed have the same lowest interface metric, then, based upon the binding order, the default gateway of the first network adapter is used. The default gateway for the second network adapter is used when the first is unavailable. In order for Host A on Network 1 to communicate with Host B on Network 2, Host A first checks its routing table to see if a specific route to Host B exists. If there is no specific route to Host B, Host A forwards its TCP/IP traffic for Host B to its own default gateway, IP Router 1.

<http://technet.microsoft.com/en-us/library/cc779696%28v=ws.10%29.aspx>  
<http://technet.microsoft.com/en-us/library/cc958877.aspx> <http://support.microsoft.com/kb/299540/en-us> QUESTION 164 You have a server named Server1 that runs Windows Server 2012 R2. You plan to create an image of Server1. You need to remove the source files for all server roles that are not installed on Server1. Which tool should you use? A. servermanagercmd.exe B. imagex.exe C. dism.exe D. ocsetup.exe Answer: C Explanation: servermanagercmd.exe - The ServerManagerCmd.exe command-line tool has been deprecated in Windows Server 2008 R2. imagex.exe - ImageX is a command-line tool in Windows Vista that you can use to create and manage Windows image (.wim) files. A .wim file contains one or more volume images, disk volumes that contain images of an installed Windows operating system. dism.exe - Deployment Image Servicing and Management (DISM.exe) is a command-line tool that can be used to service a Windows image or to prepare a Windows Preinstallation Environment (Windows PE) image. It replaces Package Manager (Pkgmgr.exe), PEimg, and Intlcfg that were included in Windows Vista. The functionality that was included in these tools is now consolidated in one tool (DISM.exe), and new functionality has been added to improve the experience for offline servicing. DISM can Add, remove, and enumerate packages. ocsetup.exe - The Ocsetup.exe tool is used as a wrapper for Package Manager (Pkgmgr.exe) and for Windows Installer (Msiexec.exe). Ocsetup.exe is a command-line utility that can be used to perform scripted installs and scripted uninstalls of Windows optional components. The Ocsetup.exe tool replaces the Sysocmgr.exe tool that Windows XP and Windows Server 2003 use.

<http://technet.microsoft.com/en-us/library/cc958877.aspx> <http://support.microsoft.com/kb/299540/en-us> <http://technet.microsoft.com/en-us/library/hh824822.aspx>  
<http://blogs.technet.com/b/joscon/archive/2010/08/26/adding-features-with-dism.aspx>  
<http://technet.microsoft.com/en-us/library/hh831809.aspx> <http://technet.microsoft.com/en-us/library/hh825265.aspx> QUESTION 165 Your network contains an Active Directory domain named contoso.com. An administrator provides you with a file that contains the information to create user accounts for 200 temporary employees. The file is shown in the exhibit. (Click the Exhibit button.)



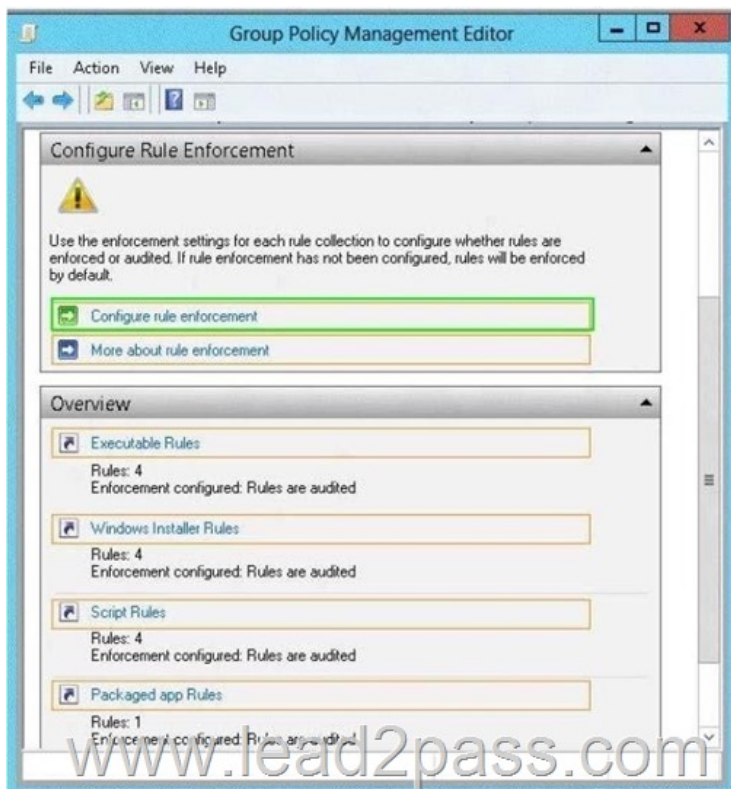
You need to automate the creation of the user accounts. You must achieve this goal by using the minimum amount of administrative effort. Which tool should you use? A. csvde B. Net user C. Ldifde D. Dsadd  
Answer: A  
Explanation: csvde - Imports and exports data from Active Directory Domain Services (AD DS) using files that store data in the comma-separated value (CSV) format. You can also support batch operations based on the CSV file format standard.

[http://technet.microsoft.com/en-us/library/cc732101\(v=ws.10\).aspx](http://technet.microsoft.com/en-us/library/cc732101(v=ws.10).aspx) Net user - Adds or modifies user accounts, or displays user account information. [http://technet.microsoft.com/en-us/library/cc771865\(v=ws.10\).aspx](http://technet.microsoft.com/en-us/library/cc771865(v=ws.10).aspx) Ldifde - Creates, modifies, and deletes directory objects. You can also use ldifde to extend the schema, export Active Directory user and group information to other applications or services, and populate Active Directory Domain Services (AD DS) with data from other directory services. [http://technet.microsoft.com/en-us/library/cc731033\(v=ws.10\).aspx](http://technet.microsoft.com/en-us/library/cc731033(v=ws.10).aspx) Dsadd - Adds specific types of objects to the directory. [http://technet.microsoft.com/en-us/library/cc753708\(v=ws.10\).aspx](http://technet.microsoft.com/en-us/library/cc753708(v=ws.10).aspx) csvde.exe is the best option to add multiple users. as you just need to export the excel spreadsheet as a csv file and make sure the parameters are correct. You can use Csvde to import and export Active Directory data that uses the comma-separated value format. Use a spreadsheet program such as Microsoft Excel to open this .csv file and view the header and value information <http://support.microsoft.com/kb/327620/en-us>  
QUESTION 166  
Hotspot Question  
Your network contains an Active Directory domain named contoso.com. All client computers run Windows 8. An administrator creates an application control policy and links the policy to an organizational unit (OU) named OU1. The application control policy contains several deny rules. The deny rules apply to the Everyone group. You need to prevent users from running the denied application. What should you configure? To answer, select the appropriate object in the answer area.



Answer:





Explanation: To enable the Enforce rules enforcement setting by using the Local Security Policy snap-in. 1. Click Start, type secpol.msc in the Search programs and files box, and then press ENTER. 2. If the User Account Control dialog box appears, confirm that the action it displays is what you want, and then click Yes. 3. In the console tree, double-click Application Control Policies, right-click AppLocker, and then click Properties. 4. On the Enforcement tab, select the Configured check box for the rule collection that you want to enforce, and then verify that Enforce rules is selected in the list for that rule collection. 5. Repeat step 4 to configure the enforcement setting to Enforce rules for additional rule collections. 6. Click OK.

[http://technet.microsoft.com/en-us/library/ee791885\(v=ws.10\).aspx](http://technet.microsoft.com/en-us/library/ee791885(v=ws.10).aspx) QUESTION 167 You have a print server named Server1 that runs Windows Server 2012 R2. You discover that when there are many pending print jobs, the system drive occasionally runs out of free space. You add a new hard disk to Server1. You create a new NTFS volume. You need to prevent the print jobs from consuming disk space on the system volume. What should you modify? A. the properties of the Print Spooler service B. the Print Server Properties C. the properties of each shared printer D. the properties on the new volume Answer: B Explanation: Windows spools print jobs by default to the following directory as the they are processed: %SystemRoot%\SYSTEM32\POOLPRINTERS. It is possible for the administrator of a Windows print server to manually instruct Windows the location for placing the spool files, if for example there is a concern for disk space. <http://support.microsoft.com/kb/137503/en-us>

<http://technet.microsoft.com/en-us/library/cc757764%28v=ws.10%29.aspx>

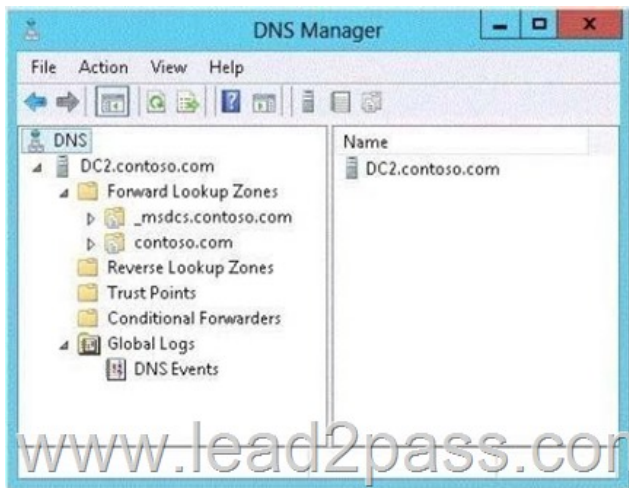
<http://technet.microsoft.com/en-us/library/cc736979%28v=ws.10%29.aspx>

QUESTION 168 Your network contains an Active Directory domain named contoso.com. The domain contains an application server named Server1. Server1 runs Windows Server 2012 R2. You have a client application named App1 that communicates to Server1 by using dynamic TCP ports. On Server1, a technician runs the following command: New-NetFirewallRule -DisplayName AllowDynamic -Direction Outbound -LocalPort 1024- 65535 -Protocol TCP Users report that they can no longer connect to Server1 by using App1. You need to ensure that App1 can connect to Server1. What should you run on Server1? A. Set-NetFirewallRule -DisplayName AllowDynamic -Action Allow B. netsh advfirewall firewall set rule name=allowdynamic new action = allow C. Set-NetFirewallRule -DisplayName AllowDynamic -Direction Inbound D. netsh advfirewall firewall add rule name=allowdynamic action=allow Answer: C

Explanation: Set-NetFirewallRule - Modifies existing firewall rules. You have to allow the connection INTO the server - inbound rules <http://technet.microsoft.com/en-us/library/jj573828%28v=wps.620%29.aspx>

<http://mikefrobbins.com/2013/02/28/use-powershell-to-remotely-enable-firewall-exceptions-on-windows-server-2012/> QUESTION

169 You have a server named dc2.contoso.com that runs Windows Server 2012 R2 and has the DNS Server server role installed. You open DNS Manager as shown in the exhibit. (Click the Exhibit button.)



You need to view the DNS server cache from DNS Manager. What should you do first? A. From the View menu, click Advanced. B. From the Action menu, click Configure a DNS Server... C. From the View menu, click Filter... D. From the Action menu, click Properties. Answer: A Explanation: To view the contents of the DNS cache, perform the following steps: 1. Start the Microsoft Management Console (MMC) DNS snap-in (Go to Start, Programs, Administrative Tools, and click DNS). 2. From the View menu, select Advanced. 3. Select the Cached Lookups tree node from the left-hand pane to display the top-level domains (e.g., com, net) under (root). Expand any of these domains to view the cached DNS information (the actual records will appear in the right-hand pane).

QUESTION 170 You work as an administrator at L2P.com. The L2P.com network consists of a single domain named L2P.com. All servers on the L2P.com network have Windows Server 2012 R2 installed. L2P.com has a server, named L2P-SR07, which has two physical disks installed. The C: drive hosts the boot partition, while the D: drive is not being used. Both disks are online. You have received instructions to create a virtual machine on L2P-SR07. Subsequent to creating the virtual machine, you have to connect the D: drive to the virtual machine. Which of the following is TRUE with regards to connecting a physical disk to a virtual machine? A. The physical disk should not be online. B. The physical disk should be uninstalled and re-installed. C. The physical disk should be configured as a striped disk. D. The physical disk should be configured as a mirrored disk. Answer: A Explanation: Your virtual machines can also be connected to physical hard disks on the virtualization server virtual hard disks. (This is sometimes referred to as having a "pass-through" disk connected to a virtual machine.) The physical hard disk that you connect to a virtual machine can also be a network-attached disk, like a logical unit number (LUN) in a storage area network (SAN). A common example is an iSCSI LUN that has been mapped to the virtualization server by using Microsoft iSCSI Initiator. Because the virtualization server sees network-attached storage as local disks, the iSCSI LUN can be connected to a virtual machine. The most important limitation about having a physical hard disk connected to a virtual machine is that it cannot be connected to the virtualization server or to other virtual machines at the same time. The virtual machine must have exclusive access to the physical hard disk.

Pass-through Disk Configuration Hyper-V allows virtual machines to access storage mapped directly to the Hyper-V server without requiring the volume be configured. The storage can either be a physical disk internal to the Hyper-V server or it can be a Storage Area Network (SAN) Logical Unit (LUN) mapped to the Hyper-V server. To ensure the Guest has exclusive access to the storage, it must be placed in an Offline state from the Hyper-V server perspective

<http://blogs.technet.com/b/askcore/archive/2008/10/24/configuring-pass-through-disks-in-hyper-v.aspx>  
<http://technet.microsoft.com/pt-pt/library/ff404147%28v=ws.10%29.aspx> ATTENTION: Best Microsoft 70-410 exam questions and answers for you to pass the exam at the first time. All the questions are new updated. 100% exam coverage and 100% pass rate. Free download the latest 70-410 PDF and VCE dumps on Lead2pass.com. <http://www.lead2pass.com/70-410.html>